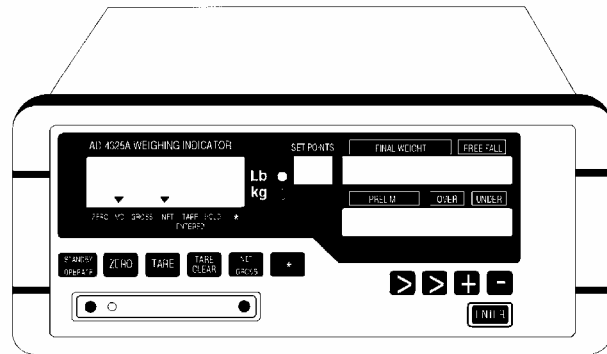


AD-4325A/V

Batch Control Indicators

**Fast, Rugged,
Versatile and
Reliable Batching
Control Indicators
for Dynamic &
Process Weighing
Applications**



Features

- High speed sampling rate of 170 times per second - exceeds most operational requirements
- Full Digital Calibration makes zero and span calibration a simple task
- Up to 100 coded sets of setpoint values can be stored into memory, and easily recalled from the front panel, personal computer (via serial interface), thumbwheel (via standard interface connector) or PLC
- Fully Automatic Mode allows the batching operation to be started and completed automatically without the intervention or assistance of an operator
- Batch Weighing with Automatic Freefall Compensation (AFFC) provides closer tolerance and better accuracy
- 1/10,000 Display Resolution meets maximum resolution for NTEP Class III-type approval
- Large Sealed Keys - dust and water resistant
- Protected from electromagnetic interference (EMI) and radio frequency interference (RFI)
- Watch-dog™ Circuitry monitors the CPU and automatically resets the unit for normal operation if a software crash develops

NTEP Approval #92-177

Fax-on-Demand
(800) 726-7099, Press 2 / (408) 263-2278
Document #2004
www.andweighing.com

last saved: 1/23/02

AND
A&D WEIGHING
...Clearly a Better Value



1555 McCandless Drive
Milpitas, CA 95035, USA
Toll Free: (800) 726-7099
Phone: (408) 263-5333
Fax: (408) 263-0119

AD-4325A / V Specifications

Input Sensitivity	0.6 μ V/D or greater
Maximum Input	36mV
ZERO Adjustment Range	0.35mV to 24 mV
Loadcell Excitation	12V DC \pm 5% 280mA, Remote Sensing can be connected to up to eight 350 Ω Load Cells
Non-Linearity	0.01% of Full Scale
ZERO Temperature Coefficient	\pm (0.2 μ V + 0.0008% of Dead Load) / $^{\circ}$ C TYP
Span Temperature Coefficient	\pm 0.0008%/ $^{\circ}$ C TYP
Input Noise	\pm 0.3 Ω Vp-p
Input Impedance	\pm 10M Ω or above
A/D Conversation Method	3 phase, true integrating dual-slope type
A/D Resolution	96,000 counts maximum
A/D Conversion Rate	Approximately 70 times per second
Max. Display Resolution	1/10,000
Main Display	7-segment, 7-digit cobalt-blue display, VFD screen at 13mm character size display the weight
Unit Indication LED	2 types (lb, kg)
Control Keys	6 Keys (ZERO key, TARE key, TARE CLEARED key, NET/GROSS key, *key, ON/OFF key)
Set Point Display	7-segments, 2-digits LED
Set Point Control Keys	6 keys (SET POINT RECALL*) key, "<" key, ">" key, "+" key, "-" key, ENTER key)
Dip-Switches	4 switches (S1 is for the Systems Check, S2 - Calibration, S3 - F-function mode, S4 - Front Panel key enable/ disabling)
Power Requirements	100, 117, 200, 220 or 240V AC, (+10%,-15%) 50/60Hz, Approx. 30VA
Operating Temperature	23 $^{\circ}$ F to 104 $^{\circ}$ F (-5 $^{\circ}$ C to 40 $^{\circ}$ C)
Maximum Humidity	85% (non-condensing)
Storage Temperature	5 $^{\circ}$ F to 158 $^{\circ}$ F (-15 $^{\circ}$ C to 70 $^{\circ}$ C)
Dimensions AD-4325A	AD-4325A 270 (W) x 120 (H) x 234 (D) mm 10.6 (W) x 4.7 (H) x 9.2 (D) inch
Dimensions AD-4325V	AD-4325V 144 (W) x 240 (H) x 233 (D) mm 5.5 (W) x 9.4 (H) x 9.2 (D) inch

Specifications are subject to change without notice

Options

- AD-4324-01 BCD Output
- AD-4325-02 Relay Output
- AD-4325-03 RS-422 Output
- AD-4324-04 Serial Output (RS-232C/Current Loop)
- AD-4323-07 Analog Output (4 ~ 20mA)

Fax-on-Demand

(800) 726-7099, Press 2 / (408) 263-2278

Document #2004

www.andweighing.com

last saved: 1/23/02



1555 McCandless Drive
Milpitas, CA 95035, USA
Toll Free: (800) 726-7099
Phone: (408) 263-5333
Fax: (408) 263-0119